

PTZ Thermal Camera

M6 Series PTZ Thermal Camera is vehicle-mounted for outdoor observation, searching, and security patrol. With an infrared detector with a high-resolution of 640×512, M6 can provide crisp and clear images and can work with laser pointers and laser rangefinders. With two axes, M6 can continuously rotate 360° in azimuth and ±90° rotation in pitch. It is controlled through a wired 485 keyboard or wireless WIFI App. All these functions are to help users search targets quickly and accurately.



M6 Series

01 High Resolution

640×512 high-resolution infrared detector
50Hz high frame rate

04 Various Interfaces

Output (analog video, H.264 network, WIFI)
Input (WIFI, PELCO_D supported)

02 Stable Performance

Two-axes rotation, brushless motor direct driving
low noise, stable performance

05 Multiple Mounting and Using Methods

Wired: (base mounting + vehicle-mounted cigarette lighter power supply
+ 485 keyboard control + analog video)
Wireless: (suction cup + external battery pack + App control + WIFI video)

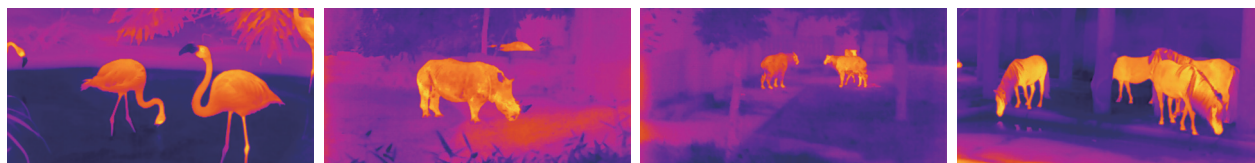
03 Multiple Functions

Two-axes gyro image stabilization, preset, cruise
optional laser pointer and rangefinder

06 Ingress Protection

Operating temperature: -20~60°C
easy to deal with various severe weather conditions

Main Technical Specifications



Model	M6S		M6D		M6T	
	M6S19	M6S25	M6D19	M6D25	M6T19	M6T25
Thermal Imaging						
Detector Type	640×512 VOx Microbolometer					
Pixel Size	12μm					
Spectrum Range	8~14μm					
Thermal Sensitivity (NETD)	≤50mK					
Detector Frame Rate	50Hz					
Lens Focal Length	19mm	25mm	19mm	25mm	19mm	25mm
Field of View (FOV)	22.9°×18.4°	17.5°×14.0°	22.9°×18.4°	17.5°×14.0°	22.9°×18.4°	17.5°×14.0°
Imaging Range	≥3m					
Digital Zoom	×1 ×2 ×4					
Image Processing	Digital filter noise reduction/digital detail enhancement					
PTZ						
Azimuth Range	360° continuous rotation					
Pitch Range	-90°~90°					
Motor	Brushless motor direct driving, without transmission mechanism, with low noise and stable performance					
Number of Preset Points	Up to 8					
Auto Cruise	Trace: Cruise in the order of preset points					
Gyro Stabilization	Azimuth and pitch two-axes gyro stabilization supported					
Function Features						
Laser Pointing	×		✓		✓	
Laser Ranging	×		×		✓	
Power Supply						
Power Supply	DC 12V					
Power Consumption	Normal 8.4W, peak 24W					
Interfaces						
Wireless Network (WIFI)	Supported					
Ethernet	Supported					
Network Video Output	Browser page output and H.264 network video stream supported					
Analog Video Output	PAL analog video output					
Storage	Built-in 64G memory, photo taking, video recording, and network access to memory supported					
Control	RS485 PELCO-D protocol and network control interface (InfiRayOutdoor App supported)					
Environmental/Physical Parameters						
Window Defrosting	Automatic defrost depending on the ambient temperature after startup					
Operating Temperature Range	-20~60°C					
Waterproof Grade	IP56					
Dimensions	φ133mm, 188mm high					
Weight	2kg					
Mounting Method						
Suction Cup	Supported					
Fixed Mounting	With mounting bracket					
Accessories						
Standard configuration	Power supply aviation cable and connector/network aviation cable and connector/vehicle-mounted cigarette lighter/mounting base/mounting screws and tools/suction cup					
Optional	485 joystick keyboard/vehicle-mounted display screen/external battery pack					

*The information is for illustration only. Images and technical specifications contained herein are subject to changes without notice.



InfiRay Technologies Co., Ltd.
Tel: +86-400-998-3088
Website: www.infiray.com

Weitere Informationen unter:
<https://venari-jagdtechnik.de/produkt-kategorie/waermebildkamera-auto/>

Telefonische Beratung unter: 04402 / 97689 50